

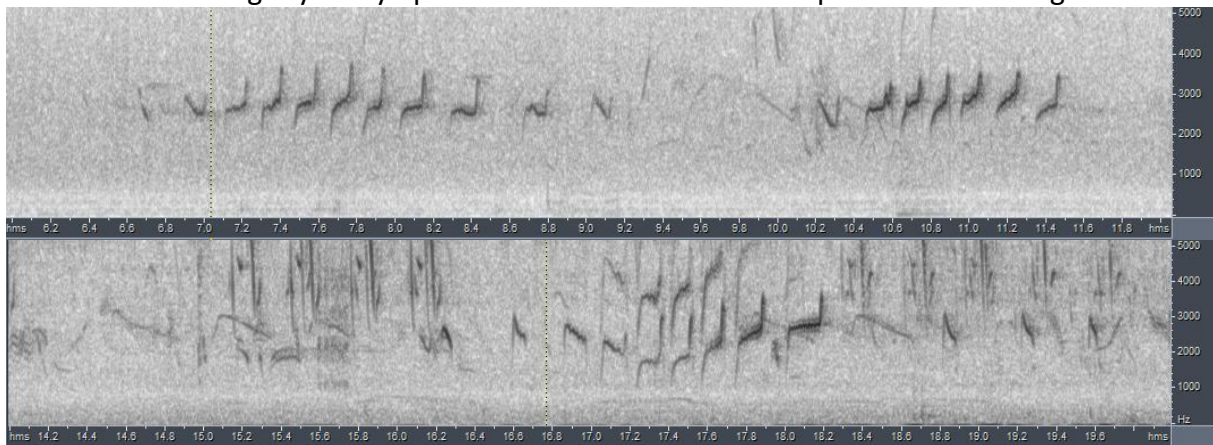
## Notes on the vocalizations of Common Wood-shrike (*Tephrodornis pondicerianus*)

Peter Boesman

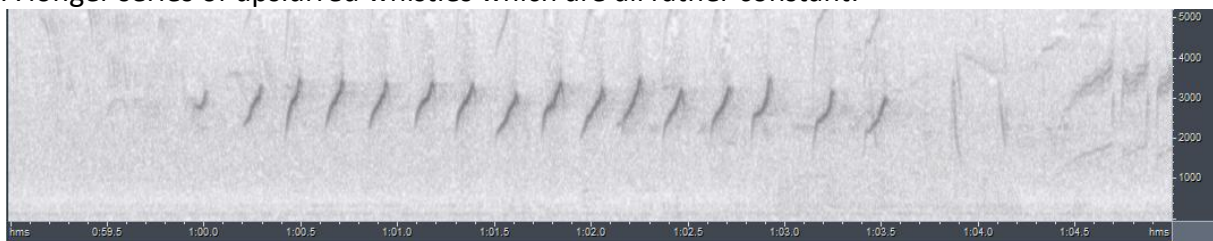
In the following we briefly analyze and compare voice of the different races of Common Wood-shrike (*Tephrodornis pondicerianus*). We also try to quantify the extent of any vocal differences using the criteria proposed by Tobias *et al.* (2010), as a support for taxonomic review. We have made use of sound recordings available on-line from Xeno Canto (XC), Macaulay Library (ML) and Avian Vocalizations Center (AVoCet), and Warakagoda (2008).

Of main interest is race *affinis* of Sri Lanka. We have only located two recordings of this race. Apparently there are (at least) two different vocalizations:

A short series of slightly burry upslurred whistles with variable pace and note length:



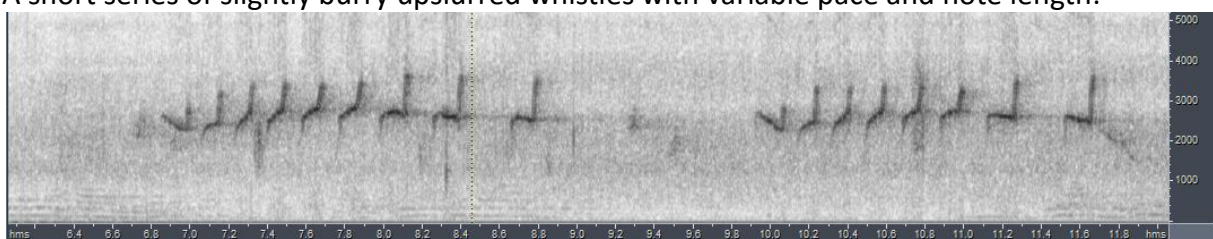
A longer series of upslurred whistles which are all rather constant:

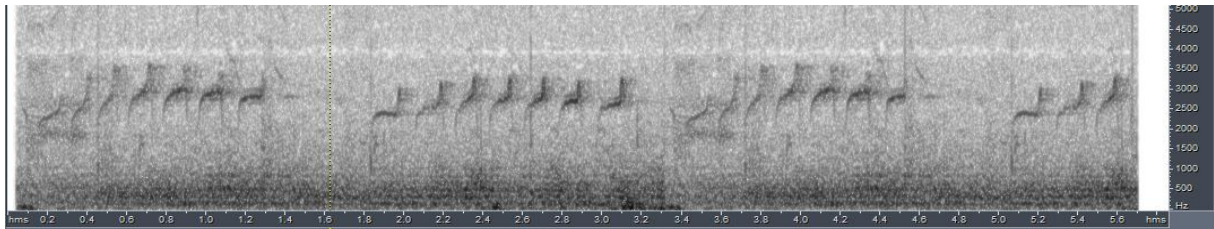


We compare these vocalizations with homologous vocalizations of the other races:

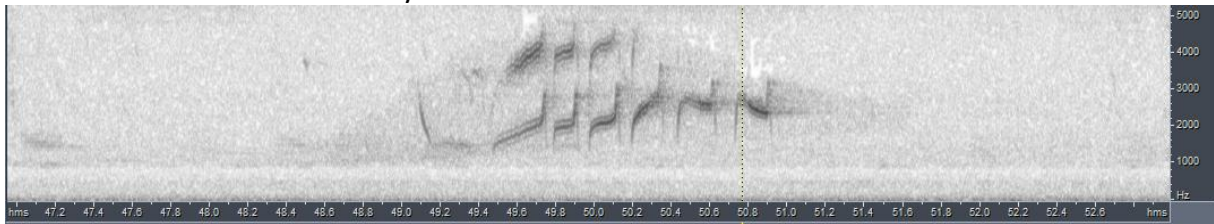
### nominate

A short series of slightly burry upslurred whistles with variable pace and note length:

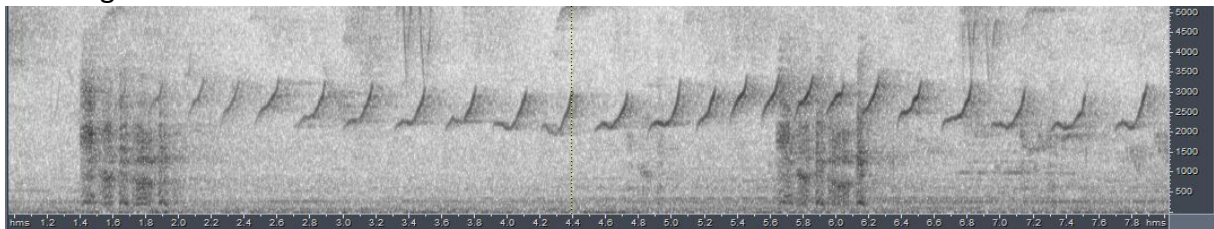




or a similar series of more burry notes:

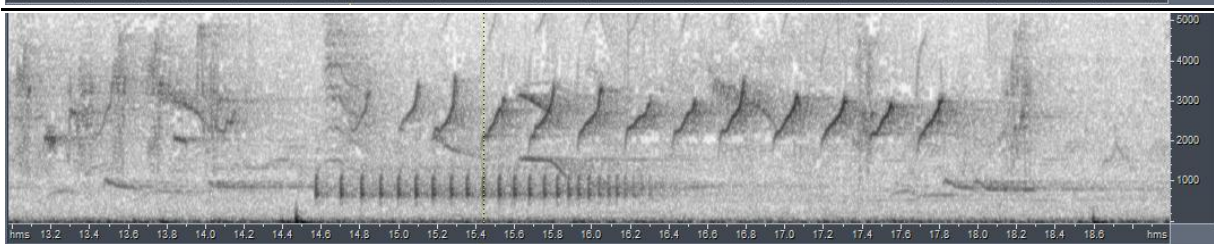
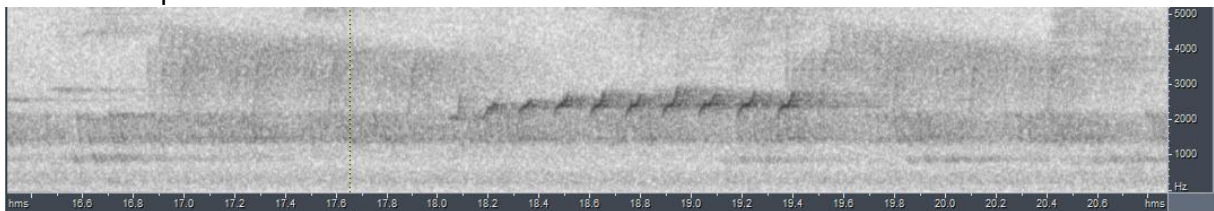


or a longer series:

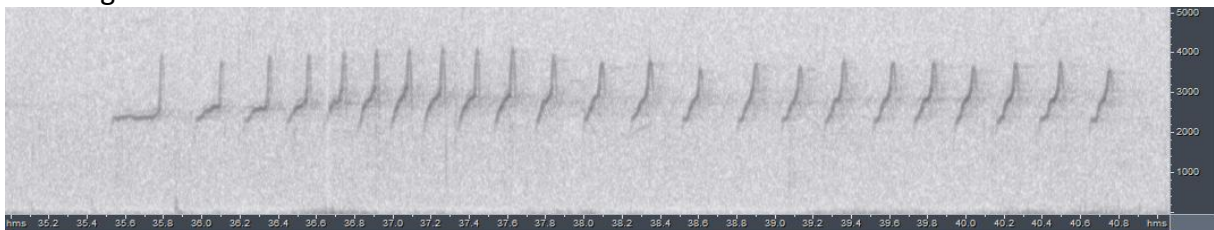


race *orientis*

A series of upslurred whistles:



or a longer series:



We couldn't locate homologous vocalizations of race *pallidus* (XC149695 of uncertain origin).

In Rasmussen *et al.* (2012) , it is said: "Most vocalizations (of Ceylon Woodshrike) are similar to Common Woodshrike, but the main song-type differs strongly from any song-type of Common". This 'main song type' (according to the description) seemingly is the longer vocalization depicted above. *nominate* rarely makes such identical longer vocalizations, although the longer type depicted above comes very close. Furthermore, *orientis* also has such longer vocalizations, which are very similar to *affinis*. Obviously, with so few recordings available of *affinis*, the relative frequency with which the different vocalizations are given can't be determined.

The shorter song type is probably not separable, although *nominate* more often starts with a rather hoarse burry note quality.

All in all, it would seem that the vocal differences of *affinis* are rather overrated. We would require a much larger set of recordings to find out if there are any consistent differences in the vocalizations of *affinis* compared to the other races.

This note was finalized on 17th November 2015, using sound recordings available on-line at that moment. We would like to thank in particular the sound recordists: Sarthak Awhad, Patrik Åberg, Pronoy Baidia, Sagar Chandane, David Edwards, David Farrow, Vir Joshi, Frank Lambert, Linda Macaulay, Mike Nelson, Ramit Singal and Deepal Warakagoda.

## References

Rasmussen, P.C. & Anderton, J.C. (2012). Birds of South Asia: the Ripley Guide. *Lynx Edicions*, Barcelona.

Tobias, J.A., Seddon, N., Spottiswoode, C.N., Pilgrim, J.D., Fishpool, L.D.C. & Collar, N.J. (2010). Quantitative criteria for species delimitation. *Ibis* 152(4): 724–746.

Warakagoda, D., Hettige, U. (2008). Birds of Sri Lanka: MP3 sound and image collection. *Birdsounds.nl*. Westernieland.

## Recommended citation

Boesman, P. (2016). Notes on the vocalizations of Common Wood-shrike (*Tephrodornis pondicerianus*). *HBW Alive Ornithological Note* 184. In: *Handbook of the Birds of the World Alive*. Lynx Edicions, Barcelona. (retrieved from <http://www.hbw.com/node/932122> on 25 August 2016).